

UNLOCKING THE FUTURE OF SEABED MINERALS

SUSTAINABILITY THROUGH
PROVEN INNOVATION



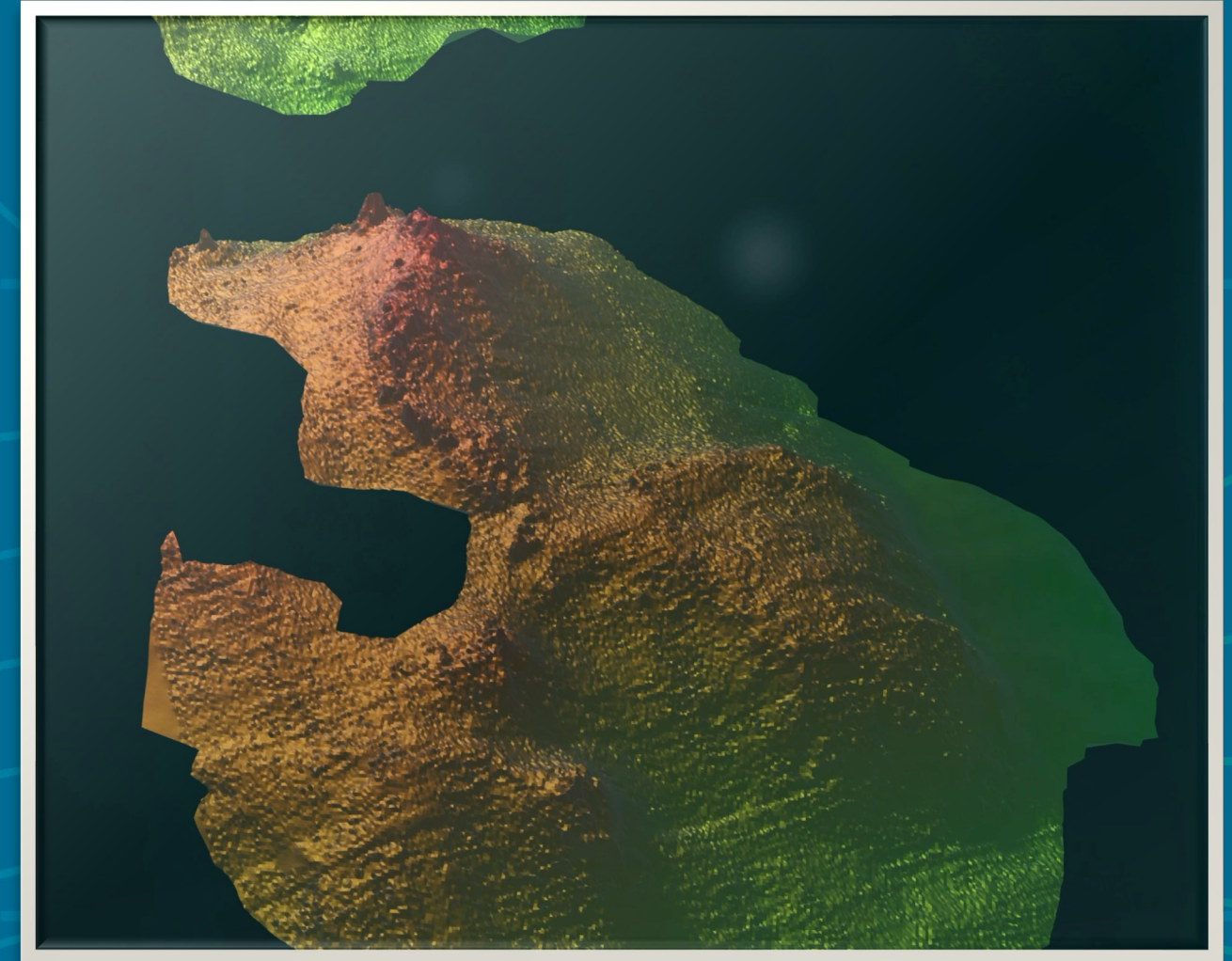
SOLWARA 1



COPPERGOLD



WE ARE SMS; OUR EVOLUTION



&



&



=



Sustainable Mining Solutions

+



MAGELLAN



COPPERGOLD



MAGELLAN'S DEEP-WATER EXPERTISE DEPLOYED

» Magellan is experienced in deep and ultra deep-water seabed and hoisted operations.

» Solwara 1 is at 1,700 metres

» **SMS** is deploying proven technology through Magellan's experience.



MAGELLAN'S DEEP-WATER EXPERTISE RE-DEPLOYED

» Magellan is experienced in deep and ultra deep-water seabed and hoisted operations.

» Solwara 1 is at 1,700 metres

» **SMS** is deploying proven technology through Magellan's experience



COMMUNITY ENGAGEMENT & LOCAL BENEFITS

In partnership with Papua New Guinea's government and provinces, SMS has initiatives in place to ensure the local community benefit from the presence of SMS's operations, including:

- Commitment to local employment and skills training.
- Fresh provisions from Namatanai.
- Vessel re supply from Rabaul.
- Using hotels and Airports (POM, Kavieng and Namatanai).
- Procuring spares locally.



CASE STUDY LAWRENCE



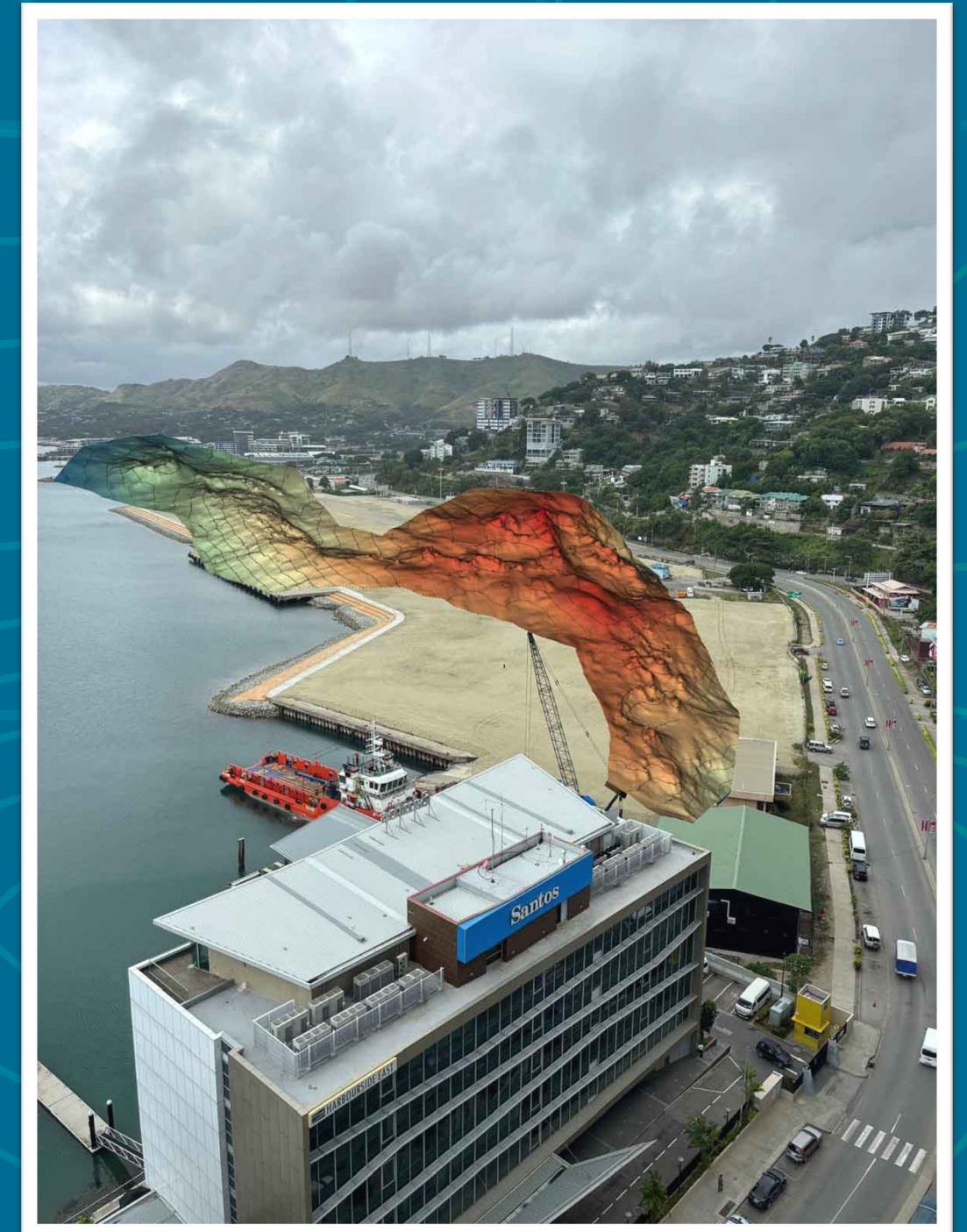
AN OPTIMAL SOLUTION FOR COPPERGOLD

- » Deep-sea resources present an **untapped opportunity** for sustainable supply.
- » Solwara1 grade is at least **12 higher** than the grade at Ok Tedi
- » Higher grade ores deliver **multiple sustainability benefits** across the mineral extraction value chain.



AN OPTIMAL SOLUTION FOR COPPERGOLD

- » Deep-sea resources present an **untapped opportunity** for sustainable supply.
- » Solwara1 grade is at least **12 higher** than the grade at Ok Tedi
- » Higher grade ores deliver **multiple sustainability benefits** across the mineral extraction value chain.



AN OPTIMAL SOLUTION FOR COPPERGOLD

- » Deep-sea resources present an **untapped opportunity** for sustainable supply.
- » Solwara1 grade is at least **12 higher** than the grade at Ok Tedi
- » Higher grade ores deliver **multiple sustainability benefits** across the mineral extraction value chain.



THE THREE STAGES OF THE SOLWARA 1 PROJECT

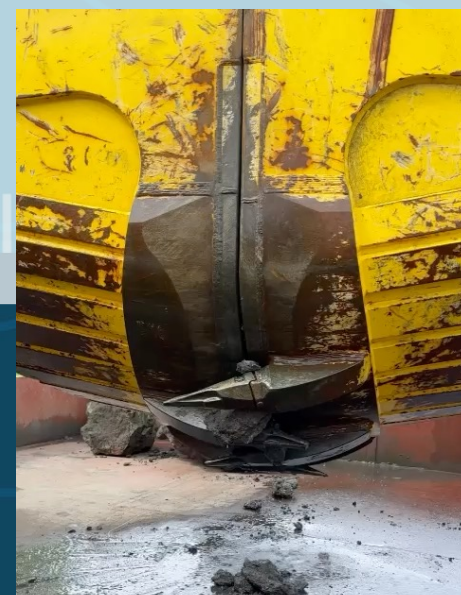
STAGE 1: PROOF OF CONCEPT

- » Designed and tested a system for Grab sampling.
- » Demonstrated operational viability.



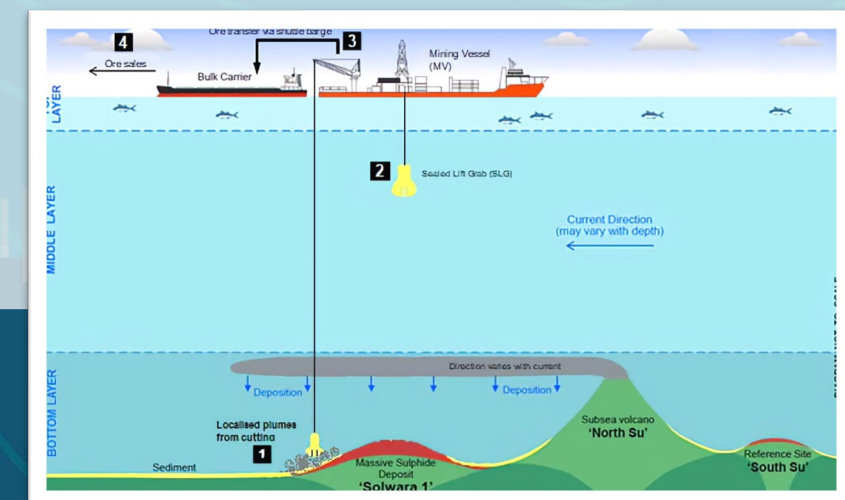
STAGE 2: BULK SAMPLING

- » Conducted live sample recovery tests & environmental monitoring.
- » Continuously refined the enclosed Grab system design. Tested technology to its limits.

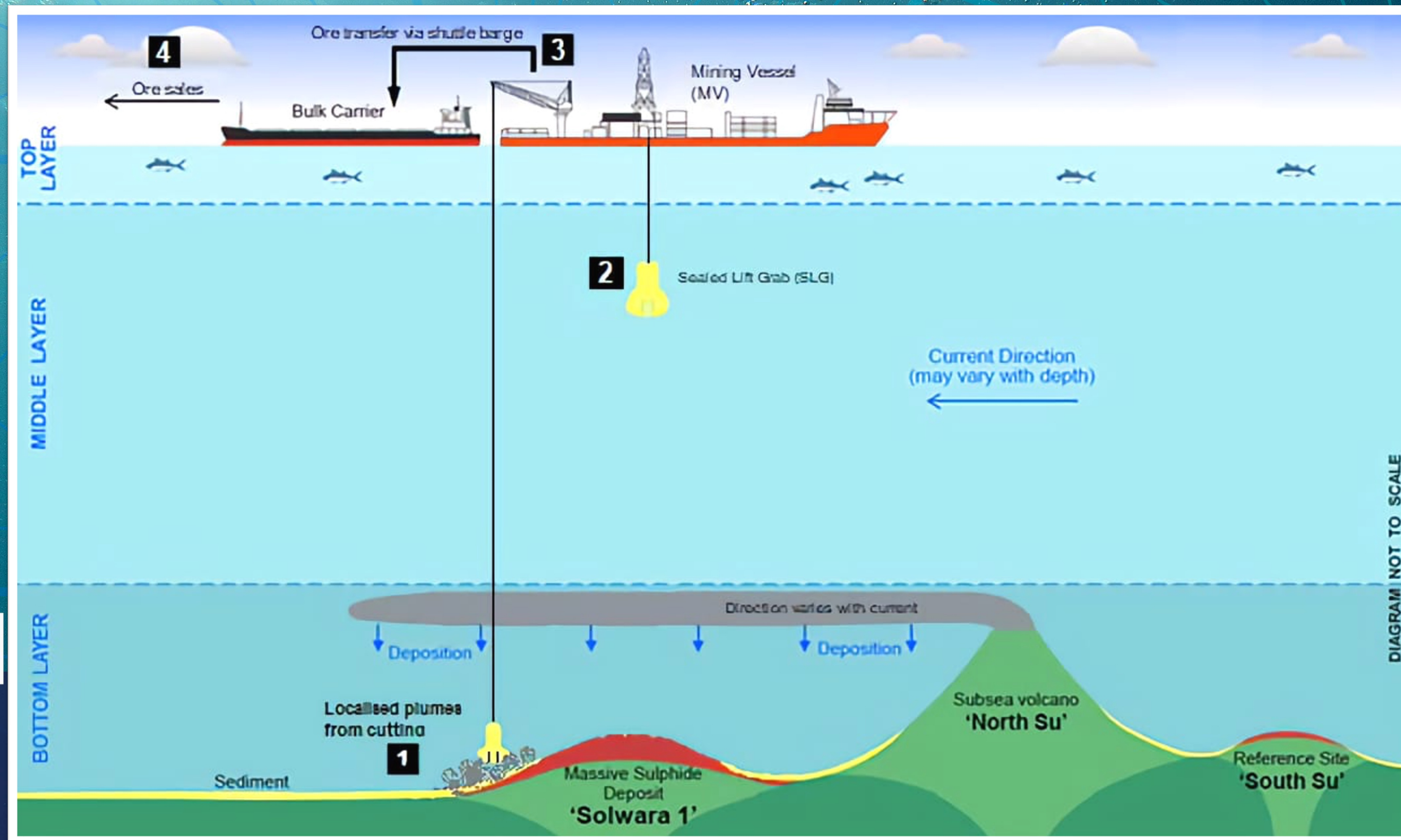


STAGE 3: COMMERCIAL MINING

- » Planning in progress for the future commercial mining phase.
- » Commercial mining will continue to refine technical innovations to minimise environmental impacts.



STAGE 3: COMMERCIAL MINING

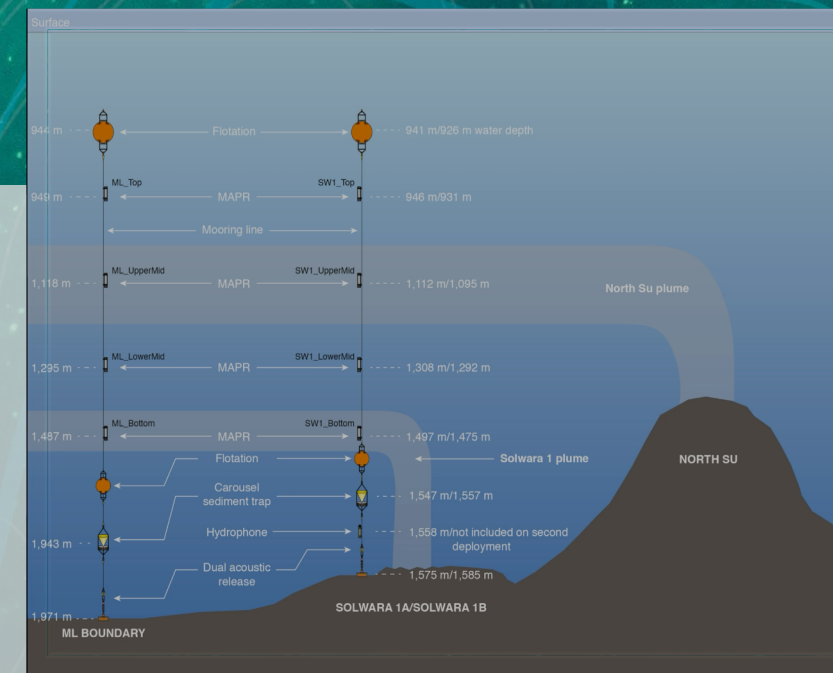


MANAGING & MITIGATING ENVIRONMENTAL RISK

» CHALLENGING TO SCRUTINISE BECAUSE EXTENT OF MINING OPERATIONS CANNOT BE SEEN.

MITIGATION:

- Static & Realtime Environmental monitoring sensors and sampling
- Innovative sealed mining system minimises sediment and water exchange
- Stream live footage of mining to surface for constant transparency of activity



MANAGING & MITIGATING ENVIRONMENTAL RISK

» Independent environmental team onboard throughout.

» EMMP & Reporting

» Real-time profiling of live Grab operations



MAGELLAN CAPABILITY

DIGITISATION OF LARGE SUBMERGED ASSETS PERFECTED.

- » Showcased capability by creating the **Titanic Digital Twin**.
- » SMS will deploy **Digital Twin capability** to provide the transparency required to operate a responsible mine.
- » Used by SMS at Solwara 1 to:
 - Calculate volume of orebody extraction.
 - Baseline for environmental mapping.
 - Transparent compliance reporting.

WHY DIGITISE THE TITANIC?

BELONGINGS OF THE PASSENGERS AND
CREW SPREAD ACROSS A 3 MILE RADIUS

DIGITISATION OF LARGE SUBMERGED ASSETS PERFECTED.

- » Showcased capability by creating the **Titanic Digital Twin**.
- » SMS will deploy **Digital Twin capability** to provide the transparency required to operate a responsible mine.
- » Used by SMS at Solwara 1 to:
 - Calculate volume of orebody extraction.
 - Baseline to for environmental mapping.
 - Transparent compliance reporting.

SMS' VISION: A SUSTAINABLE MINING SOLUTION

- » **Mining is not just about resources.** It's about balancing sustainability, economic needs, and environmental stewardship.
- » The Solwara 1 project showcases how **prioritising technical and operational innovation** can minimise negative sustainable impacts whilst meeting global mineral demands.



THANK YOU

YOUR QUESTIONS PLEASE?

**SMS IS COMMITTED TO
TRANSPARENCY**

