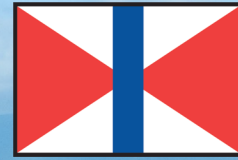


December 2024



SWIRE SHIPPING

# INVESTMENT IN PNG

Toby Griffiths  
Country Manager Australia



For External Use



# PROUD MEMBER OF THE SWIRE GROUP

Founded in 1872, Swire Shipping is the deep-sea liner and projects shipping arm wholly owned by the Swire group, and its oldest operating entity. **We celebrated our 150<sup>th</sup> anniversary in 2022.**

PROPERTY



BEVERAGES & FOOD CHAIN



AVIATION



MARINE SERVICES



TRADING AND INDUSTRIAL



HEALTHCARE



# LINER SHIPPING OVERVIEW

## Our Footprint Today



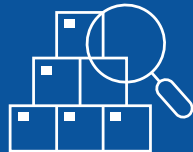
**13**

Liner Services



**>10**

Million Tonnes of Cargo Carried



**>380k**

Total TEU equivalent



**>190**

Ports Served



**>3400**

Customers Served



**96.2**

Port Safety Record (YTD)



# OUR INVESTMENT IN PAPUA NEW GUINEA

**FIXED DAY SERVICES**

**THE DOMESTIC MARKET**

**BOOM READY ECONOMY**

**LOCAL COMMUNITIES**



An aerial photograph of a large container ship docked at a port. The ship is heavily loaded with colorful shipping containers (red, blue, yellow, green). A tugboat is positioned to the left of the ship. The port area includes a concrete pier, a small boat, and stacks of containers on the right. The background shows a lush green coastline with buildings and palm trees.

# INVESTMENT IN **FIXED DAY SERVICES**



# PAPUA NEW GUINEA'S SHIPPING LINE OF CHOICE





**FIXED DAY SERVICES**

**#1 SHIPPING CARRIER FOR  
ON TIME PERFORMANCE**



**PLAN WITH PRECISION**



**BOOST PRODUCTIVITY WITH  
LOWER DOWNTIMES**



**BOOST CASH FLOW**



**LOWER DISRUPTION RISKS**



**BENEFITS TO BE PASSED ON  
THROUGH SUPPLY CHAIN**



INVESTMENT IN

# THE DOMESTIC MARKET





# GLOBAL REACH ACROSS OCEANS



3,200+



45



46 Offices

People, Our Greatest Asset

## DEVELOPING TALENT FOR THE FUTURE



- 140 Staff employed in PNG
- 90% local workforce
- Career opportunities across our network
- 83 Papua New Guinean seafarers

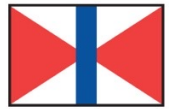


# OUR LOCAL NETWORK

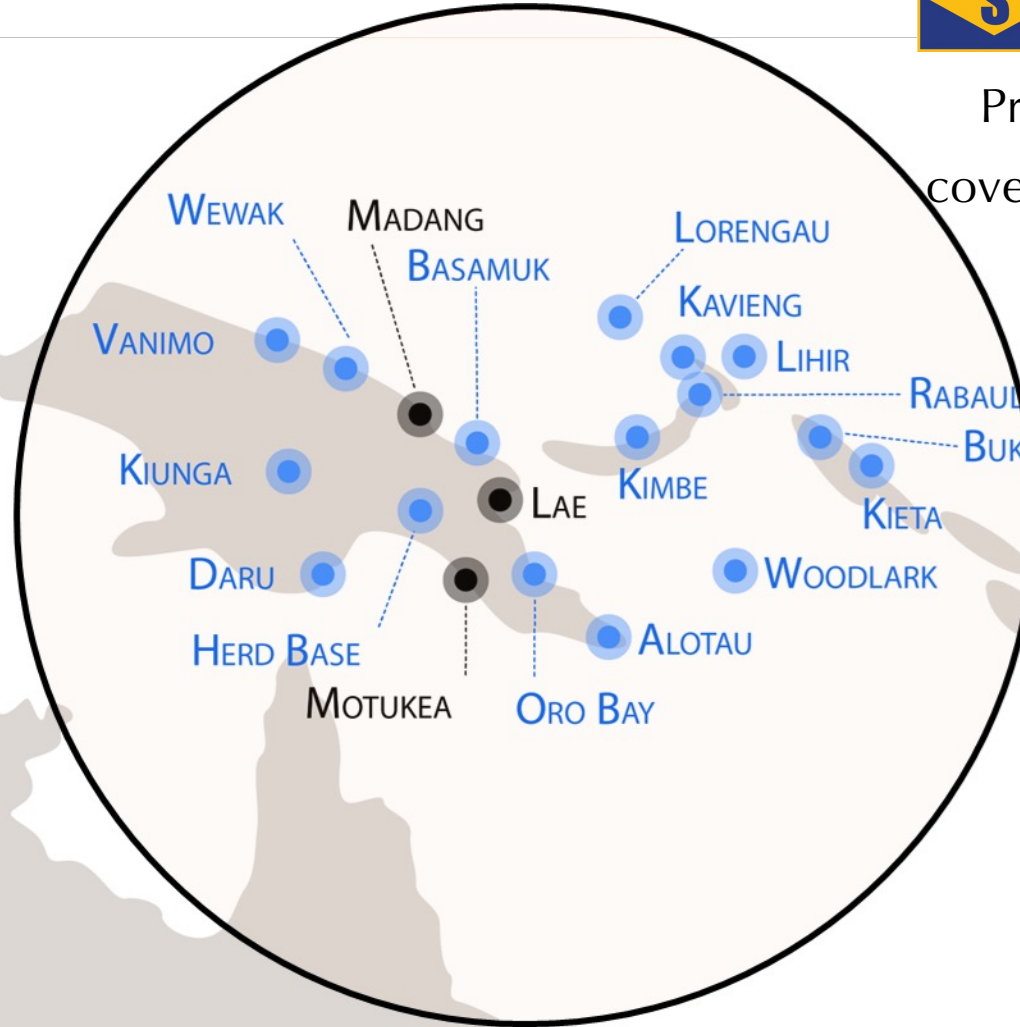


## STEAMSHIPS

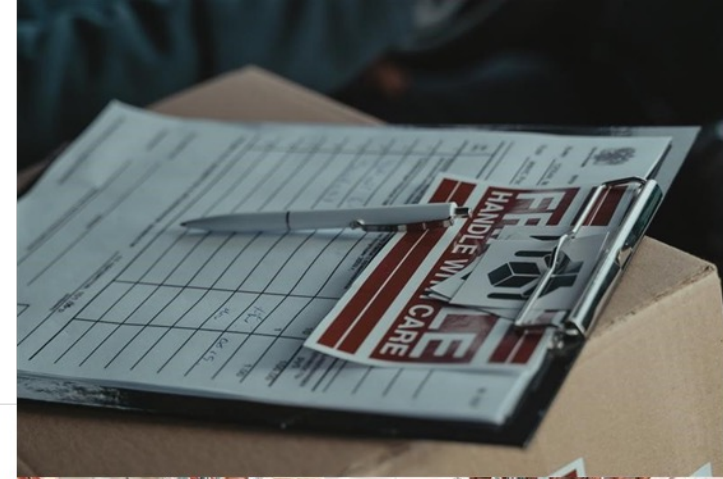
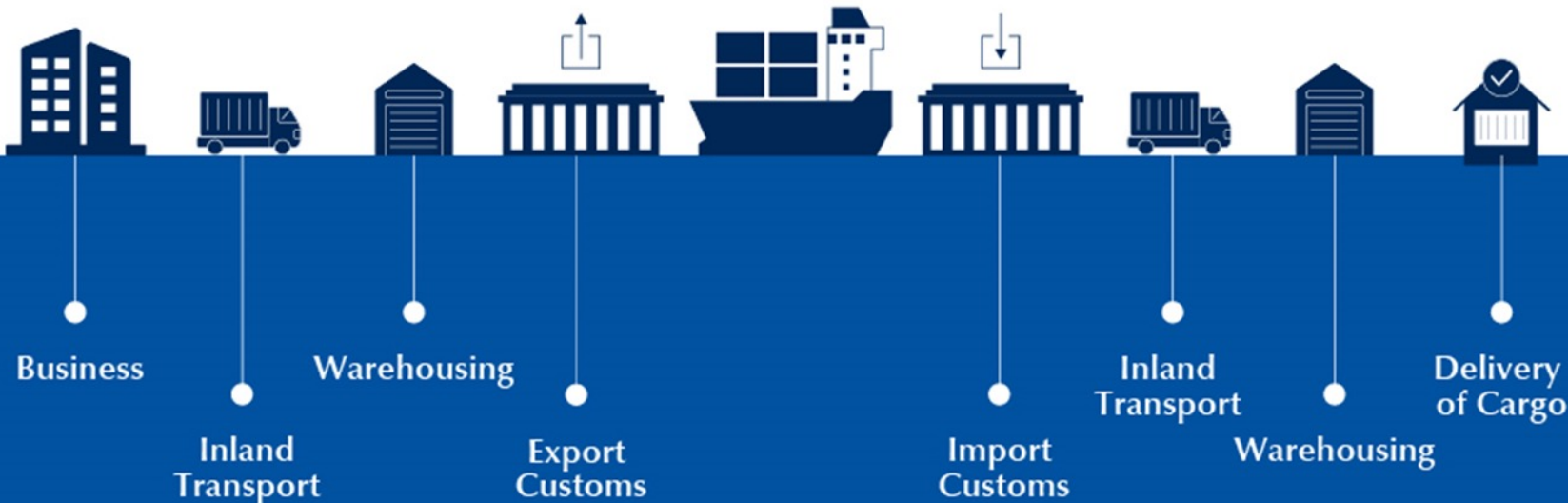
Providing comprehensive coverage across major ports in PNG



## SWIRE SHIPPING

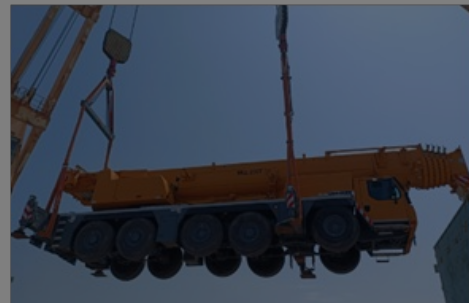


# MORE THAN A SHIPPING LINE

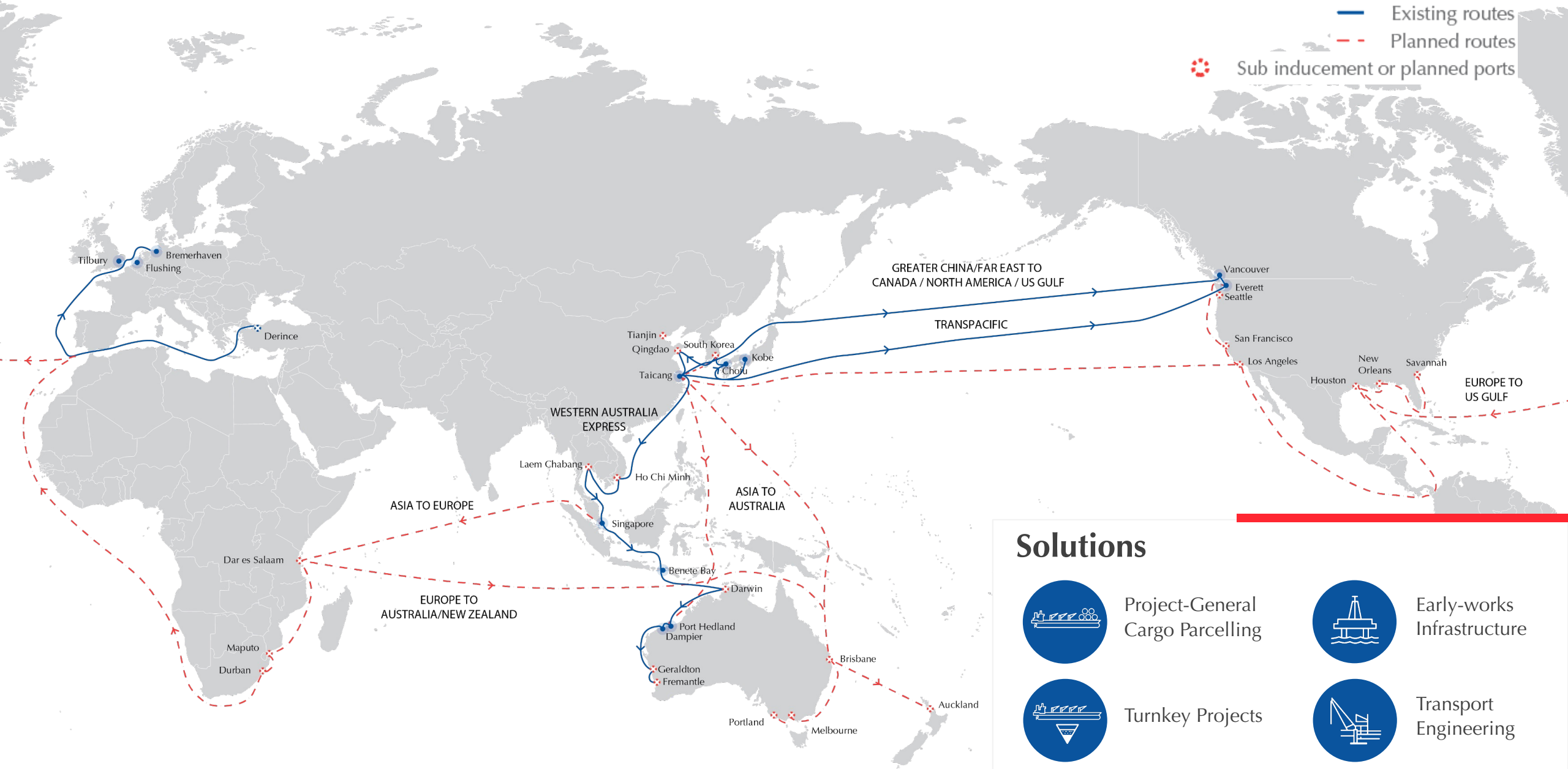




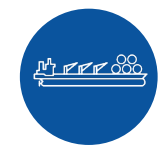
# INVESTMENT IN A BOOM-READY ECONOMY



# SWIRE PROJECTS



## Solutions



Project-General  
Cargo Parcelling



Early-works  
Infrastructure



Turnkey Projects



Transport  
Engineering



# SWIRE PROJECTS

## WAX (Semi-Liner)

Connecting major ports in China, South Korea, Japan, Southeast Asia and Western Australia, and additional ports on inducement basis.



## NOPAC (Semi-Liner)

Connecting East Asia with the West Coast of North America with base ports in Qingdao, Taicang, Everett and Vancouver, and additional ports on inducement basis.



## GTA

On demand



# INVESTMENT IN LOCAL COMMUNITIES

FUNNEL FLAPS



# OUR JOURNEY TOWARDS A SUSTAINABLE FUTURE



## Safety

- Safety journey that commenced in 2016
- Highest standards of safety
  - Implement standards across our diversified business



## People

- Our greatest asset
- Culture journey
- Diversity, Equity, and Inclusion
- Talent development



## Communities

- SwireShipping THRIVE
- ESG implementation
- Enriching lives
- Sizeable role we play in the societies of the South Pacific



## Energy Transition

- Decarbonisation Roadmap
- Net Zero GHG Emissions by 2050
- Leading supporter of green transition



## Technology

- 24/7 Business support
- Data driven and process-led
- Online experience
  - Optimise
  - Technology Roadmap

# SUPPORTING COMMUNITIES



**Assisting Cheshire  
Disability Services**



**Sea Women of  
Melanesia**



**Women in  
Maritime**



**Advancing  
Cervical Cancer  
Elimination**



# Thank You

